

## EOS Aluminium AlSi10Mg High Productive Process

# EOS Aluminium AlSi10Mg HiPro Process Builds Parts Fast

The HiPro process parameters offer the highest productivity of aluminum parts on the EOS M 400-4.



## Main Characteristics

- Similar mechanical properties as casting parts
- Up to 261 cm<sup>3</sup>/h build rate
- Very cost efficient
- Variable options in development

## Typical Applications

AlSi10Mg is a very widely used casting alloy. This process parameter is developed specifically for fast production and similar quality as conventional produced casting parts.

## Headquarters

EOS GmbH  
Electro Optical Systems  
Robert-Stirling-Ring 1  
D-82152 Krailling/Munich  
Germany  
Phone +49 89 893 36-0  
Fax +49 89 893 36-285

[www.eos.info](http://www.eos.info)  
[info@eos.info](mailto:info@eos.info)

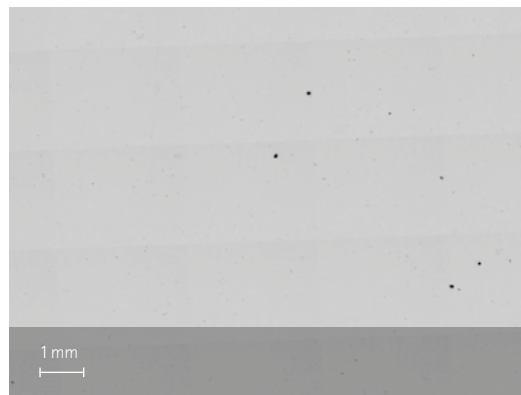
## Key parameters

Current TRL	5
Target TRL	open
System	EOS M 400-4
Material	EOS Aluminium AlSi10Mg
Process	HiPro with 80µm layer thickness

## Layer thickness 80 µm

Volume rate 18.1 mm<sup>3</sup>/s

Porosity 0.3%



## Further EOS Offices

EOS France  
Phone +33 437 49 76 76

EOS Greater China  
Phone +86 21 602307 00

EOS India  
Phone +91 44 39 64 80 00

EOS Italy  
Phone +39 02 33 40 16 59

EOS Japan  
Phone +81 45 670 0250

EOS Korea  
Phone +82 2 6330 5800

EOS Nordic & Baltic  
Phone +46 31 760 46 40

EOS of North America  
Phone +1 877 388 7916

EOS Singapore  
Phone +65 6430 0463

EOS UK  
Phone +44 1926 675 110

## Typical part properties

Mechanical properties as manufactured	R <sub>m</sub> ~ 370 MPa	R <sub>p0.2</sub> ~ 230 MPa	A <sub>25</sub> ~ 2.5 %
Mechanical properties heat treated	R <sub>m</sub> ~ 310 MPa	R <sub>p0.2</sub> ~ 220 MPa	A <sub>25</sub> ~ 6 %
Surface roughness vertical	R <sub>a</sub> = 15 µm		

Status 07/2019 (V1.0, 2019-02)

EOS is certified according to ISO 9001. EOS®, DMLS® and EOSPRINT® are registered trademarks of EOS GmbH in some countries. For more information visit [www.eos.info/trademarks](http://www.eos.info/trademarks).

The quoted values refer to the use of this material with above specified type of EOS DMLS system, EOSYSTEM and EOSPRINT software version, parameter set and operation in compliance with parameter sheet and operating instructions. Part properties are measured with specified measurement methods using defined test geometries and procedures. Further details of the test procedures used by EOS are available on request. Any deviation from these standard settings may affect the measured properties. The data correspond to EOS knowledge and experience at the time of publication and they are subject to change without notice as part of EOS' continuous development and improvement processes. EOS does not warrant any properties or fitness for a specific purpose, unless explicitly agreed upon. This also applies regarding any rights of protection as well as laws and regulations.

