

METAL SOLUTIONS

EOS M 400-4

- Up to 4x more productivity
- Four precise 400-watt fiber lasers
- Build volume of 400 x 400 x 400 mm



EXPOSURE MODULE

LASERS

4 x
400 W

The precise Yb fiber lasers with their fixed focus expose a square 400 x 400 mm area.

SOFTWARE



EOS BUILD / BUILD+

EOS Build subscriptions offer enhanced EOSPRINT features for multiple users with flexible material management; Build+ adds more licenses, advanced materials, and training for up to 5 users.



EOS SMART MONITORING

EOS Smart Monitoring utilizes Exposure OT for comprehensive build monitoring and pairs it with Smart Fusion to regulate heat within set parameters in collaboration with EOS Build/Build+.



EOS DATA INSIGHTS

Data Insights offers unparalleled insights into machine performance — either individually or as a whole park of devices.



EOS SYSTEM SUITE

EOS System Suite optimizes production by streamlining processes, integrating with MES and shop-floor IT systems, and generating detailed quality reports.



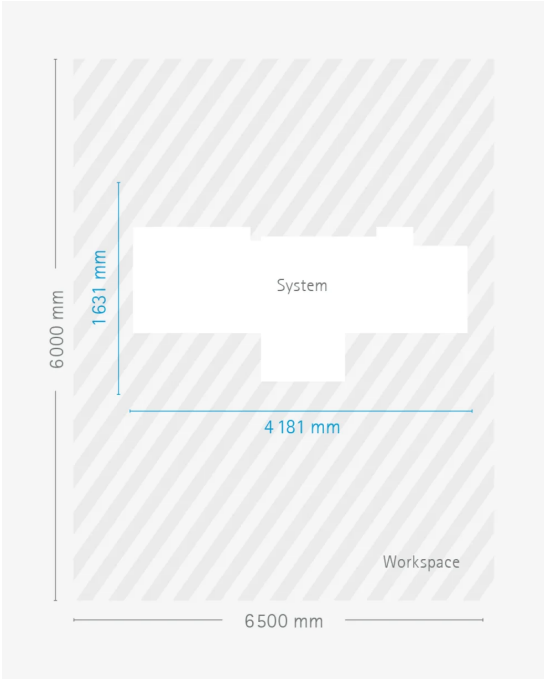
EOS M 400-4

TECHNICAL DATA

BUILD VOLUME	400 x 400 x 400* mm (15.7 x 15.7 x 15.7 in)
LASER TYPE	Yb-fiber laser; 4 x 400 W
PRECISION OPTICS	4 F-theta-lens(es); 4 High-speed scanner(s)
SCAN SPEED	up to 7.0 m/s (23.0 ft/s)
FOCUS DIAMETER	approx. 100 µm (0.00394 in)
POWER SUPPLY	3 x 50 A
POWER CONSUMPTION	max. 45 kW / typical 22 kW
COMPRESSED AIR SUPPLY	7 Bar; 20 m³/h (102 psi; 706 ft³/h)

* Height includes build plate

DIMENSIONS & WEIGHT



EOS M 400-4 with IPM M Setup Station L

Height: 2.355 mm / Weight approx. 4.835 kg

System

Workspace

EOS M 400-4

EOS Aluminium AlSi10Mg



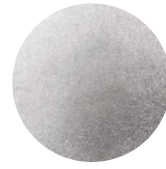
EOS CaseHardeningSteel
20MnCr5



EOS MaragingSteel MS1



EOS NickelAlloy HAYNES® 282®



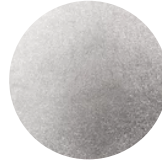
EOS NickelAlloy HX



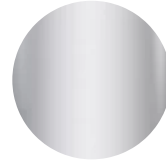
EOS NickelAlloy IN718



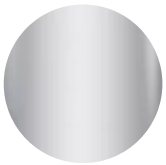
EOS NickelAlloy IN939



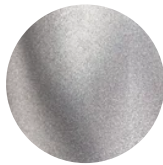
EOS StainlessSteel 17-4PH



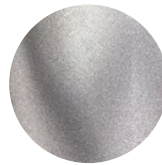
EOS StainlessSteel 316L



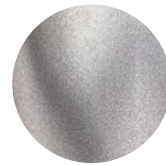
EOS Titanium Ti64



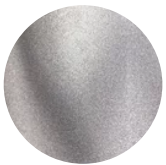
EOS Titanium Ti64 Grade 23



EOS Titanium Ti64 Grade 5



EOS Titanium TiCP Grade 2



OPTIONAL ACCESSORIES



IPCM M Extra

Manual and flexible powder handling

HEADQUARTERS

EOS GmbH
Electro Optical Systems

Robert-Stirling-Ring 1
82152 Krailling / Munich
Germany

Tel.: +49 89 893 36-0
Email: info@eos.info
URL: www.eos.info

Status as of 17.05.2024. Subject to technical modifications. EOS is certified according to ISO 9001.

EOS®, Additive Minds® Alumide®, AMQ®, CarbonMide®, DirectMetal®, DMLS®, EOSAME®, EOSINT®, EOSIZE®, EOSPACE®, EOSPRINT®, EOSTATE®, EOSTYLE®, FORMIGA®, LaserProFusion®, PA 2200®, PrimeCast® and PrimePart® are registered trademarks of EOS GmbH Electro Optical Systems in some countries. For more information visit www.eos.info/trademarks.