

METAL SOLUTIONS

EOS M 400

- Increased productivity thanks to 1000-watt laser power
- Modular platform with process and set-up station
- Build volume of 400 x 400 x 400 mm



EXPOSURE MODULE

LASERS

1 x
1 kW

The precise Yb fiber lasers with their fixed focus expose a square 400 x 400 mm area.

SOFTWARE



EOS BUILD / BUILD+

EOS Build subscriptions offer enhanced EOSPRINT features for multiple users with flexible material management; Build+ adds more licenses, advanced materials, and training for up to 5 users.



EOS DATA INSIGHTS

Data Insights offers unparalleled insights into machine performance — either individually or as a whole park of devices.



EOS SYSTEM SUITE

EOS System Suite optimizes production by streamlining processes, integrating with MES and shop-floor IT systems, and generating detailed quality reports.



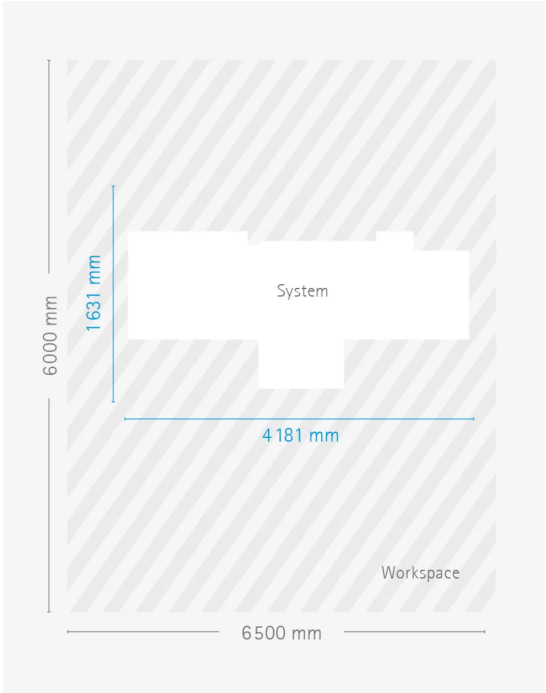
EOS M 400

TECHNICAL DATA

BUILD VOLUME	400 x 400 x 400* mm (15.7 x 15.7 x 15.7 in)
LASER TYPE	Yb-fiber laser; 1 x 1000 W
PRECISION OPTICS	1 F-theta-lens(es); 1 High-speed scanner(s)
SCAN SPEED	up to 7.0 m/s (23.0 ft/s)
FOCUS DIAMETER	approx. 90 µm (0.00354 in)
POWER SUPPLY	1 x 50 A
POWER CONSUMPTION	max. 50.2 kW / typical 16.22 kW
COMPRESSED AIR SUPPLY	7 Bar; 20 m³/h (102 psi; 706 ft³/h)

* Height includes build plate

DIMENSIONS & WEIGHT



EOS M 400 with IPM M Setup Station L

Height: 2.340 mm / Weight approx. 4.635 kg



EOS M 400

EOS Aluminium AlF357



EOS Aluminium AlSi10Mg



EOS Aluminium Al2139 AM



EOS CopperAlloy CuNi30



EOS CopperAlloy CuCrZr



EOS MaragingSteel MS1



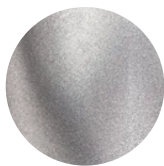
EOS NickelAlloy IN718



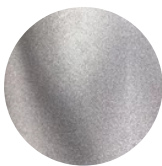
EOS StainlessSteel 316L



EOS Titanium Ti64



EOS Titanium Ti64ELI



OPTIONAL ACCESSORIES



IPCM M Extra

Manual and flexible powder handling



IPCM M Pro

Semi-automated powder handling



HEADQUARTERS

EOS GmbH
Electro Optical Systems

Robert-Stirling-Ring 1
82152 Krailling / Munich
Germany

Tel.: +49 89 893 36-0
Email: info@eos.info
URL: www.eos.info

Status as of 11.05.2024. Subject to technical modifications. EOS is certified according to ISO 9001.

EOS®, Additive Minds® Alumide®, AMQ®, CarbonMide®, DirectMetal®, DMLS®, EOSAME®, EOSINT®, EOSIZE®, EOSPACE®, EOSPRINT®, EOSTATE®, EOSTYLE®, FORMIGA®, LaserProFusion®, PA 2200®, PrimeCast® and PrimePart® are registered trademarks of EOS GmbH Electro Optical Systems in some countries. For more information visit www.eos.info/trademarks.