

METAL SOLUTIONS

EOS M 290

- **Repeatable Excellence:** Exceptional laser quality and detail resolution ensure repeatable results – even for highly complex parts -- every single time.
- **Material Versatility:** With the widest range of validated materials and processes available on the market, all your needs are covered.
- **From Start to Part Fast:** The EOS M 290 allows fast, flexible, dependable, and cost-effective production of metal parts directly from CAD data.



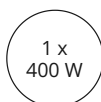
EOS M 290

The Benchmark in Metal AM with Proven DMLS® Quality

The EOS M 290, has been used in the serial production of a wide range of applications since 2014. Its robust and reliable performance has been built on the legacy of its three predecessors, ensuring homogeneous part properties from part-to-part, job-to-job, and machine-to-machine. The wide range of materials, a comprehensive monitoring suite, and the easy integration into your production make it the clear choice for flexible series production of metal parts.

EXPOSURE MODULE

LASERS



Up to two precise lasers expose in a 250 x 250mm square with different optics to choose from and Pulse Modulation enabled.

SOFTWARE



EOS BUILD

EOS Build subscriptions offer enhanced EOSPRINT features for multiple users with flexible material management; Build+ adds more licenses, advanced materials, and training for up to 5 users.



EOS SMART MONITORING

EOS Smart Monitoring utilizes Exposure OT for comprehensive build monitoring and pairs it with Smart Fusion to regulate heat within set parameters in collaboration with EOS Build/Build+.



EOS SYSTEM SUITE

EOS System Suite optimizes production by streamlining processes, integrating with MES and shop-floor IT systems, and generating detailed quality reports.



TECHNICAL DATA

Build Volume	250 x 250 x 325* mm (9.8 x 9.8 x 12.8 in)
Laser Type	Yb-fiber laser; 1 x 400 W
Precision Optics	1 F-theta-lens(es); 1 High-speed scanner(s)
Scan Speed	up to 7.0 m/s (23.0 ft/s)
Focus Diameter	approx. 100 µm (0.00394 in)
Power Supply	1 x 32 A
Power Consumption	max. 8.5 kW / typical 2.4 kW
Compressed Air Supply	7 Bar; 20 m ³ /h (102 psi; 706 ft ³ /h)

* Including build platform and application dependent.

MATERIALS & PROCESSES

EOS has exceptional materials expertise and a comprehensive portfolio of highly developed materials for additive manufacturing. Our materials, systems and process parameters fit together optimally. With the right materials, you can realize the desired property profiles in the best possible way for your products

* Including build platform and application dependent.

EOS M 290

EOS Aluminium Al5X1



EOS Aluminium AlF357



EOS Aluminium AlSi10Mg



EOS Aluminium Al2139 AM



EOS CaseHardeningSteel
20MnCr5



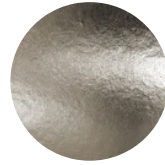
EOS CobaltChrome MP1



EOS Copper Cu



EOS CopperAlloy CuNi30



EOS FeNi36



EOS MaragingSteel MS1



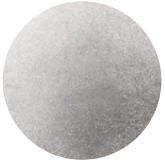
EOS Nickel NiCP



EOS NickelAlloy C22



EOS NickelAlloy HAYNES® 282®



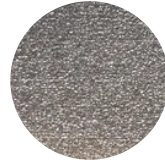
EOS NickelAlloy HX



EOS NickelAlloy IN625



EOS NickelAlloy IN718



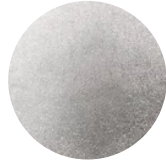
EOS NickelAlloy IN718 API



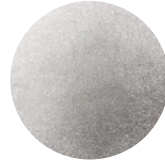
EOS NickelAlloy IN738



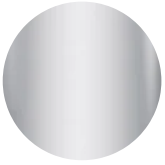
EOS NickelAlloy IN939



EOS NickelAlloy K500



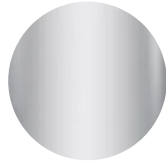
EOS StainlessSteel 17-4PH



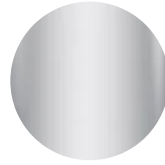
EOS StainlessSteel 254



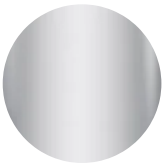
EOS StainlessSteel 316L-4404



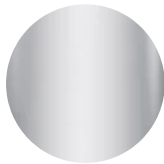
EOS StainlessSteel 316L-4441



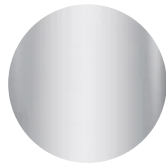
EOS StainlessSteel CX



EOS StainlessSteel PH1



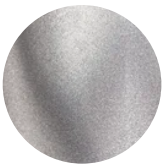
EOS StainlessSteel SuperDuplex



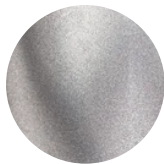
EOS Steel 42CrMo4



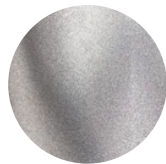
EOS Titanium Ti64



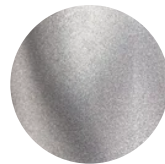
EOS Titanium Ti64 Grade 23



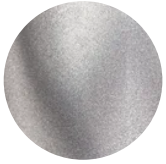
EOS Titanium Ti64 Grade 5



EOS Titanium Ti64ELI



EOS Titanium TiCP Grade 2



EOS ToolSteel 1.2709



EOS ToolSteel CM55



EOS ToolSteel H13



OPTIONAL ACCESSORIES



IPCM M Extra

Manual and flexible powder handling



Comfort Powder Module

Safe handling of powder inside the process chamber

HEADQUARTERS

EOS GmbH
Electro Optical Systems

Robert-Stirling-Ring 1
82152 Krailling / Munich
Germany

Tel.: +49 89 893 36-0
Email: info@eos.info
URL: www.eos.info

Status as of 02.04.2026. Subject to technical modifications. EOS is certified according to ISO 9001.

EOS®, Additive Minds® Alumide®, AMQ®, CarbonMide®, DirectMetal®, DMLS®, EOSAME®, EOSINT®, EOSIZE®, EOSPACE®, EOSPRINT®, EOSTATE®, EOSTYLE®, FORMIGA®, LaserProFusion®, PA 2200®, PrimeCast® and PrimePart® are registered trademarks of EOS GmbH Electro Optical Systems in some countries. For more information visit www.eos.info/trademarks.