

METAL SOLUTIONS

EOS M 400-4

- Up to 4x more productivity
- Four precise 400-watt fiber lasers
- Build volume of 400 x 400 x 400 mm



EXPOSURE MODULE

LASERS



The precise Yb fiber lasers with their fixed focus expose a square 400 x 400 mm area.

SOFTWARE



EOS BUILD

EOS Build subscriptions offer enhanced EOSPRINT features for multiple users with flexible material management; Build+ adds more licenses, advanced materials, and training for up to 5 users.



EOS SMART MONITORING

EOS Smart Monitoring utilizes Exposure OT for comprehensive build monitoring and pairs it with Smart Fusion to regulate heat within set parameters in collaboration with EOS Build/Build+.



EOS SYSTEM SUITE

EOS System Suite optimizes production by streamlining processes, integrating with MES and shop-floor IT systems, and generating detailed quality reports.



EOS M 400-4

TECHNICAL DATA

BUILD VOLUME	400 x 400 x 400* mm (15.7 x 15.7 x 15.7 in)
LASER TYPE	Yb-fiber laser; 4 x 400 W
PRECISION OPTICS	4 F-theta-lens(es); 4 High-speed scanner(s)
SCAN SPEED	up to 7.0 m/s (23.0 ft/s)
FOCUS DIAMETER	approx. 90 µm (0.00354 in)
POWER SUPPLY	3 x 50 A
POWER CONSUMPTION	max. 45.0 kW / typical 22.0 kW
COMPRESSED AIR SUPPLY	7 Bar; 20 m³/h (102 psi; 706 ft³/h)

* Building height = Full height minus the height of the building platform (ranging from 35mm to 40mm)

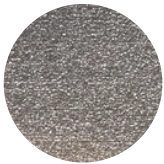
** For machine dimensions, please [contact us](#)

MATERIALS & PROCESSES

EOS has exceptional materials expertise and a comprehensive portfolio of highly developed materials for additive manufacturing. Our materials, systems and process parameters fit together optimally. With the right materials, you can realize the desired property profiles in the best possible way for your products

EOS M 400-4

EOS Nickel NiCP



EOS Aluminium AlSi10Mg



EOS Aluminium Al2139 AM



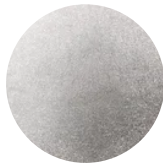
EOS CaseHardeningSteel
20MnCr5



EOS MaragingSteel MS1



EOS NickelAlloy HAYNES® 282®



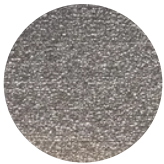
EOS NickelAlloy HX



EOS NickelAlloy IN625



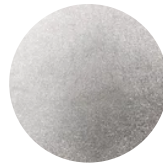
EOS NickelAlloy IN718



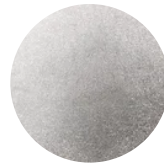
EOS NickelAlloy IN718 API



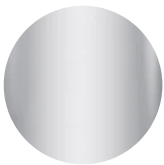
EOS NickelAlloy IN939



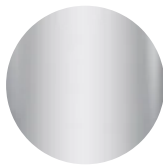
EOS NickelAlloy K500



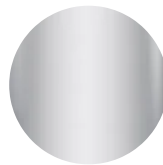
EOS StainlessSteel 17-4PH



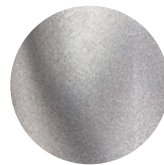
EOS StainlessSteel 316L-4404



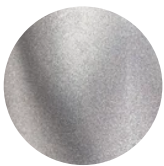
EOS StainlessSteel 316L-4441



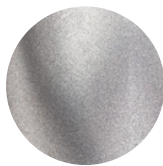
EOS Titanium Ti64



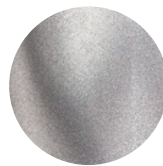
EOS Titanium Ti64 Grade 23



EOS Titanium Ti64 Grade 5



EOS Titanium TiCP Grade 2



OPTIONAL ACCESSORIES



IPCM M Extra

Manual and flexible powder handling



Volkmann Automated Powder Handling Solutions – EOS Edition

Automated closed loop powder handling solution that convey, sieve, and load metal materials

HEADQUARTERS

EOS GmbH
Electro Optical Systems

Robert-Stirling-Ring 1
82152 Krailling / Munich
Germany

Tel.: +49 89 893 36-0
Email: info@eos.info
URL: www.eos.info

Status as of 10.09.2025. Subject to technical modifications. EOS is certified according to ISO 9001.

EOS®, Additive Minds® Alumide®, AMQ®, CarbonMide®, DirectMetal®, DMLS®, EOSAME®, EOSINT®, EOSIZE®, EOSPACE®, EOSPRINT®, EOSTATE®, EOSTYLE®, FORMIGA®, LaserProFusion®, PA 2200®, PrimeCast® and PrimePart® are registered trademarks of EOS GmbH Electro Optical Systems in some countries. For more information visit www.eos.info/trademarks.