

METAL SOLUTIONS

EOS M 400

- Increased productivity thanks to 1000-watt laser power
- Modular platform with process and set-up station
- Build volume of 400 x 400 x 400 mm



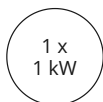
EOS M 400

Proven DMLS Quality for Industrial Production

With a 400 x 400 x 400 mm build volume, and your choice of one 1000 W or four 400 W lasers, the EOS M 400 Series combines the highest productivity with reliable and repeatable DMLS part quality. Powered by an extensive portfolio of materials and processes, the EOS M 400 Series enables the development and production of a wide variety of applications. The EOS M 400 Series is easily integrated in your production - both from a part and data flow perspective. In addition, with the EOS Shared Modules you can easily expand your machine park as demand grows - from one to many systems in one or many facilities worldwide.

EXPOSURE MODULE

LASERS



The precise Yb fiber lasers with their fixed focus expose a square 400 x 400 mm area.

SOFTWARE



EOS BUILD

EOS Build subscriptions offer enhanced EOSPRINT features for multiple users with flexible material management; Build+ adds more licenses, advanced materials, and training for up to 5 users.



EOS SYSTEM SUITE

EOS System Suite optimizes production by streamlining processes, integrating with MES and shop-floor IT systems, and generating detailed quality reports.



TECHNICAL DATA

Build Volume	400 x 400 x 400 mm (15.7 x 15.7 x 15.7 in)
Laser Type	Yb-fiber laser; 1 x 1000 W
Precision Optics	1 F-theta-lens(es); 1 High-speed scanner(s)
Scan Speed	up to 7.0 m/s (23.0 ft/s)
Focus Diameter	approx. 90 µm (0.00354 in)
Power Supply	1 x 50 A
Power Consumption	max. 50.2 kW / typical 16.2 kW
Compressed Air Supply	7 Bar; 20 m ³ /h (102 psi; 706 ft ³ /h)

* Build volume including build platform

MATERIALS & PROCESSES

EOS has exceptional materials expertise and a comprehensive portfolio of highly developed materials for additive manufacturing. Our materials, systems and process parameters fit together optimally. With the right materials, you can realize the desired property profiles in the best possible way for your products

* Build volume including build platform

EOS M 400

EOS Aluminium AlF357



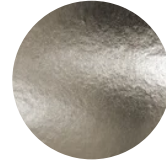
EOS Aluminium AlSi10Mg



EOS Aluminium Al2139 AM



EOS CopperAlloy CuNi30



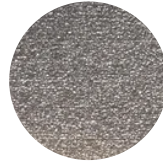
EOS CopperAlloy CuCrZr



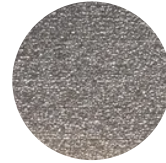
EOS MaragingSteel MS1



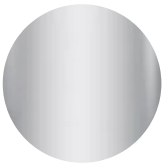
EOS NickelAlloy IN718



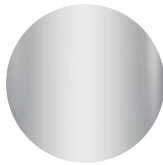
EOS NickelAlloy IN718 API



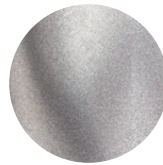
EOS StainlessSteel 316L-4404



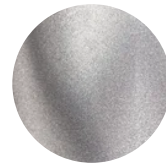
EOS StainlessSteel 316L-4441



EOS Titanium Ti64



EOS Titanium Ti64ELI



OPTIONAL ACCESSORIES



IPCM M Extra

Manual and flexible powder handling

HEADQUARTERS

EOS GmbH
Electro Optical Systems

Robert-Stirling-Ring 1
82152 Krailling / Munich
Germany

Tel.: +49 89 893 36-0
Email: info@eos.info
URL: www.eos.info

Status as of 18.05.2026. Subject to technical modifications. EOS is certified according to ISO 9001.

EOS®, Additive Minds® Alumide®, AMQ®, CarbonMide®, DirectMetal®, DMLS®, EOSAME®, EOSINT®, EOSIZE®, EOSPACE®, EOSPRINT®, EOSTATE®, EOSTYLE®, FORMIGA®, LaserProFusion®, PA 2200®, PrimeCast® and PrimePart® are registered trademarks of EOS GmbH Electro Optical Systems in some countries. For more information visit www.eos.info/trademarks.