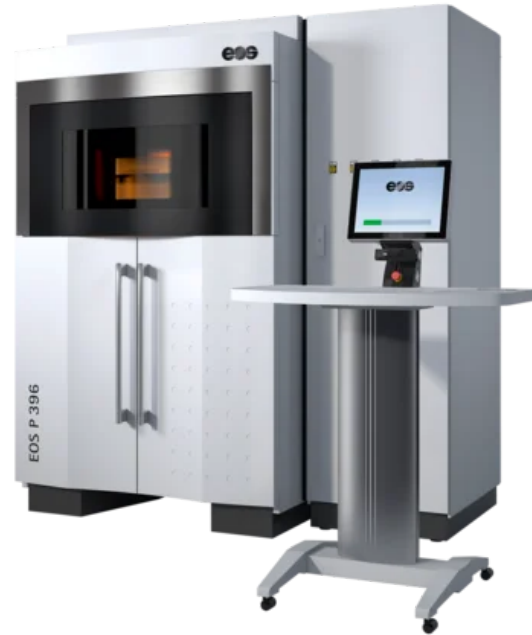


POLYMER SOLUTIONS

# EOS P 396

- All 3D printed parts with excellent mechanical properties and dimensional accuracy due to software features such as Smart Scaling, EOSAME and a continuous temperature monitoring.
- Highest productivity ensured by its powerful laser plus high scanning and recoating speed.
- A multitude of applications that fully meet industry requirements is possible with the 14 materials and their 26 parameter sets.
- Full integration into the IIoT environment with EOSCONNECT Core resulting in an entirely digital process chain from the CAD model, through ERP and MES connection, to the finished part.
- Maximum machine park uptime with digital track and trace from everywhere and at any time.
- Continuous optimization of the entire production workflow made possible with the evaluation and documentation of all build cycles.



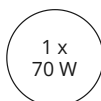
EOS P 396

## Reliable Production with the Industry's Largest Material Portfolio

The medium-sized bestselling EOS P 396 can be integrated into IIoT environments. It enables a flexible and tool-free production of everything from spare parts on-demand, to serial production.

### EXPOSURE MODULE

LASERS



# SOFTWARE



## EOS SYSTEM SUITE

EOS System Suite optimizes production by streamlining processes, integrating with MES and shop-floor IT systems, and generating detailed quality reports.



# TECHNICAL DATA

<b>Build Volume</b>	340 x 340 x 600 mm (13.4 x 13.4 x 23.6 in)
<b>Laser Type</b>	CO <sub>2</sub> ; 1 x 70 W
<b>Scan Speed</b>	up to 6.0 m/s (19.7 ft/s)
<b>Power Supply</b>	1 x 32 A
<b>Power Consumption</b>	max. 10.0 kW / typical 2.1 kW

## MATERIALS & PROCESSES

EOS has exceptional materials expertise and a comprehensive portfolio of highly developed materials for additive manufacturing. Our materials, systems and process parameters fit together optimally. With the right materials, you can realize the desired property profiles in the best possible way for your products

### EOS P 396

PA 1101



PA 1101 ClimateNeutral



PA 2200



PA 2200 CarbonReduced



PA 2201



PA 3200 GF



Alumide



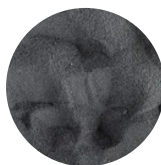
EOS TPU 1301



ALM FR-106



ALM HP 11-30



PA 2210 FR



PA 2241 FR



ALM PA 640 GSL



ALM TPE 410



# OPTIONAL ACCESSORIES

## IPCM P Plus

Fully Automatic With a Closed Powder Cycle

## Big Bag Emptying Station

Big bag emptying station for large powder containers: supply up to 400 kg of new powder

## Unpacking & Sieving Station

Unpacking and sieving station quickly removes excess material from the components, sieve and conveys used powder

## Blasting Cabinet

Manually or automatically depowder components using glass or plastic blasting media

## HEADQUARTERS

**EOS GmbH**  
**Electro Optical Systems**

Robert-Stirling-Ring 1  
82152 Krailling / Munich  
Germany

Tel.: +49 89 893 36-0  
Email: [info@eos.info](mailto:info@eos.info)  
URL: [www.eos.info](http://www.eos.info)

Status as of 14.04.2026. Subject to technical modifications. EOS is certified according to ISO 9001.

EOS®, Additive Minds® Alumide®, AMQ®, CarbonMide®, DirectMetal®, DMLS®, EOSAME®, EOSINT®, EOSIZE®, EOSPACE®, EOSPRINT®, EOSTATE®, EOSTYLE®, FORMIGA®, LaserProFusion®, PA 2200®, PrimeCast® and PrimePart® are registered trademarks of EOS GmbH Electro Optical Systems in some countries. For more information visit [www.eos.info/trademarks](http://www.eos.info/trademarks).